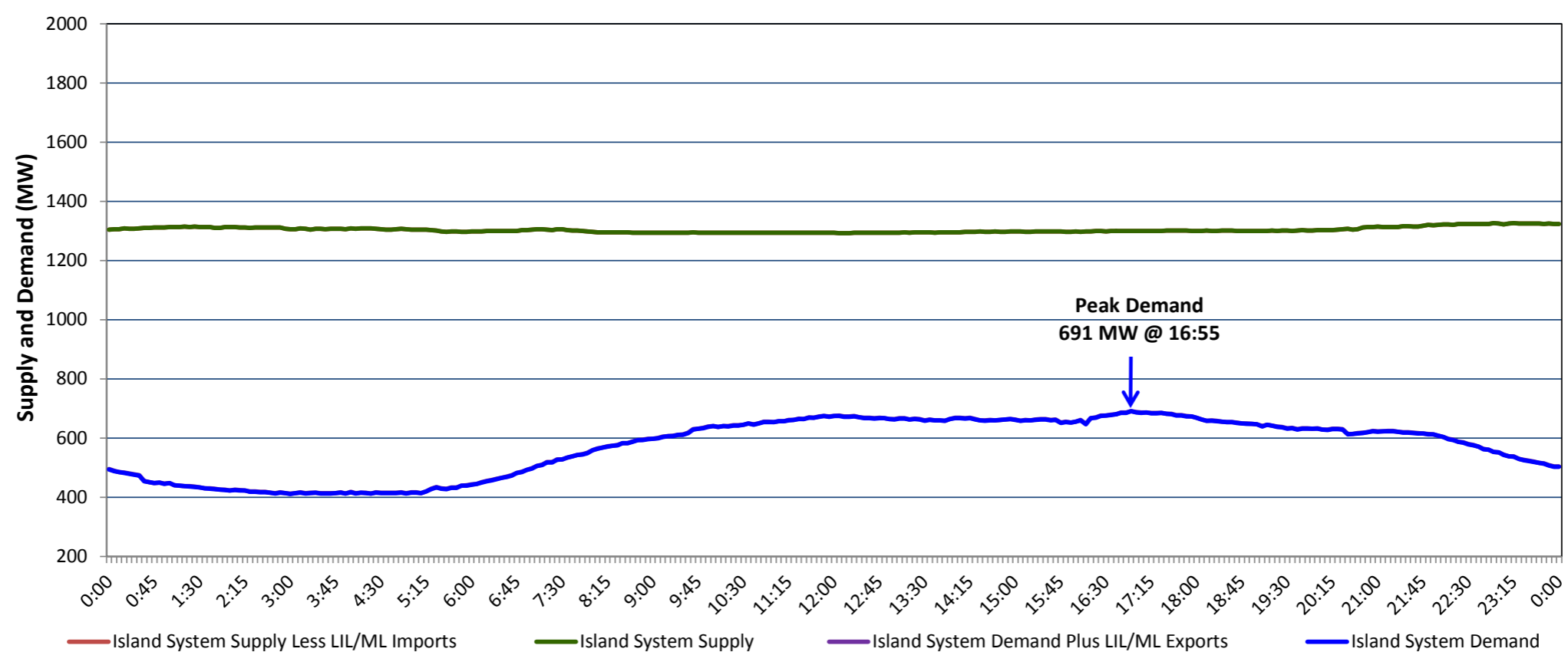


**Newfoundland Labrador Hydro (NLH)
Supply and Demand Status Report Filed Wednesday, July 15, 2020**

**Section 1
Island Interconnected System Supply, Demand & Exports
Actual 24 Hour System Performance For Tuesday, July 14, 2020**



Supply Notes For July 14, 2020

1,2

- A As of 1000 hours, May 31, 2020, Bay d'Espoir Unit 1 unavailable due to planned outage (76.5 MW).
- B As of 1415 hours, June 11, 2020, Holyrood Unit 1 unavailable due to planned outage (170 MW).
- C As of 0853 hours, June 21, 2020, Holyrood Unit 3 available but not operating (150 MW).
- D As of 2300 hours, July 03, 2020, Holyrood Unit 2 available but not operating (170 MW).
- E As of 1356 hours, July 05, 2020, Granite Canal Unit unavailable due to planned outage 36 MW (40 MW).
- F As of 1000 hours, July 06, 2020, St. Anthony Diesel Plant available at 7.7 MW (9.7 MW).
- G As of 1238 hours, July 8, 2020, Bay d'Espoir Unit 4 available at 45 MW (76.5 MW).
- H As of 1539 hours, July 13, 2020, Bay d'Espoir Unit 3 available at 25 MW (76.5 MW).

**Section 2
Island Interconnected Supply and Demand**

Wed, Jul 15, 2020	Island System Outlook ³		Seven-Day Forecast	Temperature (°C)		Island System Daily Peak Demand (MW)	
				Morning	Evening	Forecast	Adjusted ⁷
Available Island System Supply: ⁵	1,315	MW	Wednesday, July 15, 2020	9	9	770	770
NLH Island Generation: ⁴	1,000	MW	Thursday, July 16, 2020	9	10	760	760
NLH Island Power Purchases: ⁶	110	MW	Friday, July 17, 2020	9	10	795	795
Other Island Generation:	205	MW	Saturday, July 18, 2020	11	11	715	715
ML/LIL Imports:	-	MW	Sunday, July 19, 2020	13	14	705	705
Current St. John's Temperature & Windchill:	9 °C	N/A	Monday, July 20, 2020	17	19	750	750
7-Day Island Peak Demand Forecast:	795	MW	Tuesday, July 21, 2020	21	21	750	750

Supply Notes For July 15, 2020

3

- Notes:
1. Generation outages for running and corrective maintenance are included. These are not unusual for power system operations. They generally do not impact customer supply. The power system operators schedule outages to system equipment whenever possible to coincide with periods when customer demands are low and sufficient supply reserves are available. However, from time to time equipment outages are necessary and reserves may be impacted.
 2. Due to the Island system having no synchronous connections to the larger North American grid, when there is a sudden loss of large generating units there may be a requirement for some customer's load to be interrupted for short periods to bring generation output equal to customer demand. This automatic action of power system protection, referred to as under frequency load shedding (UFLS), is necessary to ensure the integrity and reliability of system equipment. Under frequency events have typically occurred 5 to 8 times per year on the Island Interconnected System and the resultant customer load interruptions are generally less than 30 minutes. With the activation of the Maritime Link frequency controller during the winter of 2018, UFLS events have occurred less frequently.
 3. As of 0800 Hours.
 4. Gross output including station service at Holyrood (24.5 MW) and improved NLH hydraulic output due to water levels (35 MW).
 5. Gross output from all Island sources (including Note 4).
 6. NLH Island Power Purchases include: CBPP Co-Gen, Nalcor Exploits, Rattle Brook, Star Lake, Wind Generation and capacity assistance (when applicable).
 7. Adjusted for curtailable load, market activities and the impact of voltage reduction when applicable.

**Section 3
Island Peak Demand Information
Previous Day Actual Peak and Current Day Forecast Peak**

Tue, Jul 14, 2020	Actual Island Peak Demand ⁸	16:55	691 MW
Wed, Jul 15, 2020	Forecast Island Peak Demand		770 MW

Notes: 8. Island Demand / LIL / ML Exports (where applicable) is supplied by NLH generation and purchases, plus generation owned and operated by Newfoundland Power and Corner Brook Pulp & Paper (Deer Lake Power, DLP).